



GMT MONTHLY MEMBERSHIP PROGRESS REPORT

Results as of: 2/28/2018

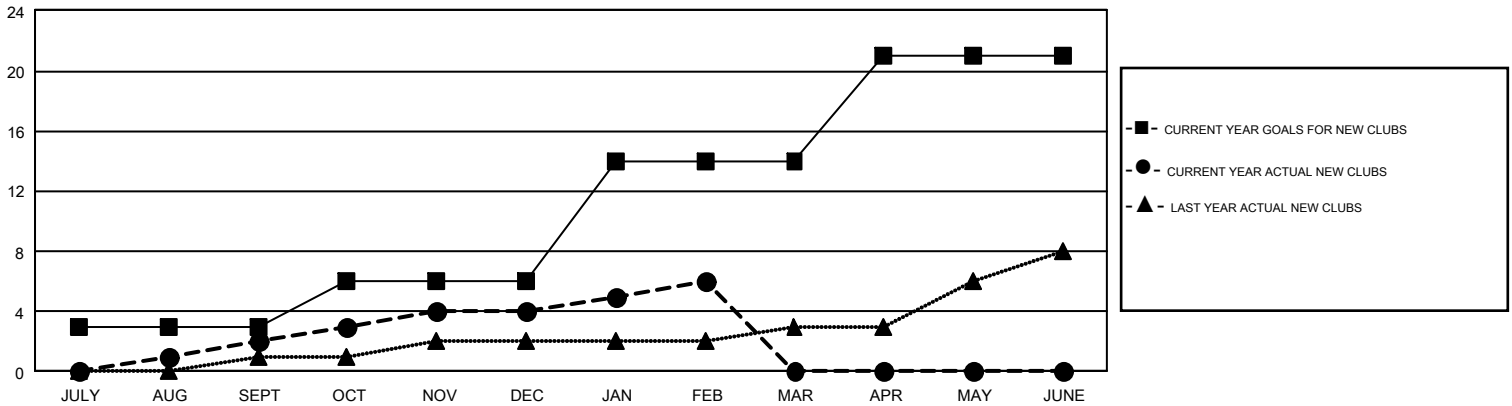
GMT Constitutional Area 7, Group A

GMT: ANN ELDRIDGE

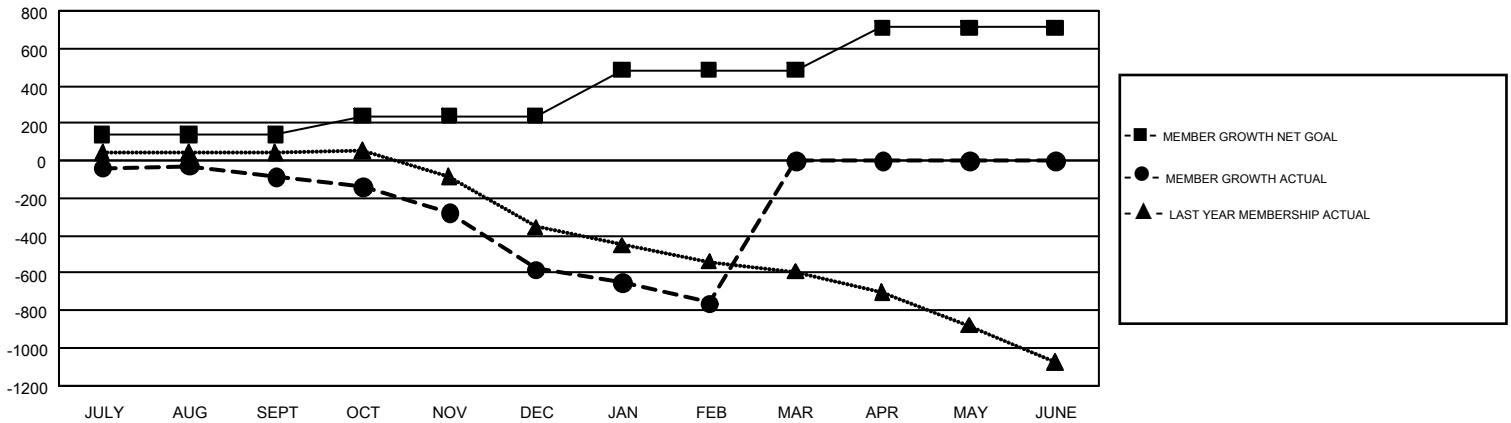
REPORT DOES NOT INCLUDE CLUBS IN UNDISTRICTED AREAS.

Clubs				Members			
RESULTS FOR 2017-2018				RESULTS FOR 2017-2018			
QUARTER	NEW CLUB GOAL	NEW CLUBS	DROPPED CLUBS	QUARTER	MEMBER GROWTH NET GOAL	MEMBER GROWTH ACTUAL	DROPPED MEMBERS ACTUAL (including transfers)
JULY/AUG/SEPT	3	2	7	JULY/AUG/SEPT	139	855	812
OCT/NOV/DEC	3	2	6	OCT/NOV/DEC	100	650	1,041
JAN/FEB/MAR	8	2	6	JAN/FEB/MAR	246	434	549
APR/MAY/JUNE	7	0	0	APR/MAY/JUNE	226	0	0

GOALS AND ACTUAL NEW CLUBS CUMULATIVE



GOALS AND ACTUAL MEMBERS CUMULATIVE



DROPPED CLUBS: 19	598 CLUBS OF 1,221 ADDED 1 OR MORE NEW MEMBERS	GENDER DISTRIBUTION MALE 16,987 (66.76%) FEMALE 8,457 (33.24%)
DROPPED MEMBERS DECEASED 192 CLUB CANCELLED 10 OTHER 2,200 <hr/> TOTAL 2,402	CLICK HERE FOR CUMULATIVE MEMBERSHIP DATA	TOTAL FAMILY UNIT MEMBERS 4,283 FAMILY MEMBERS PAYING HALF DUES 2,170